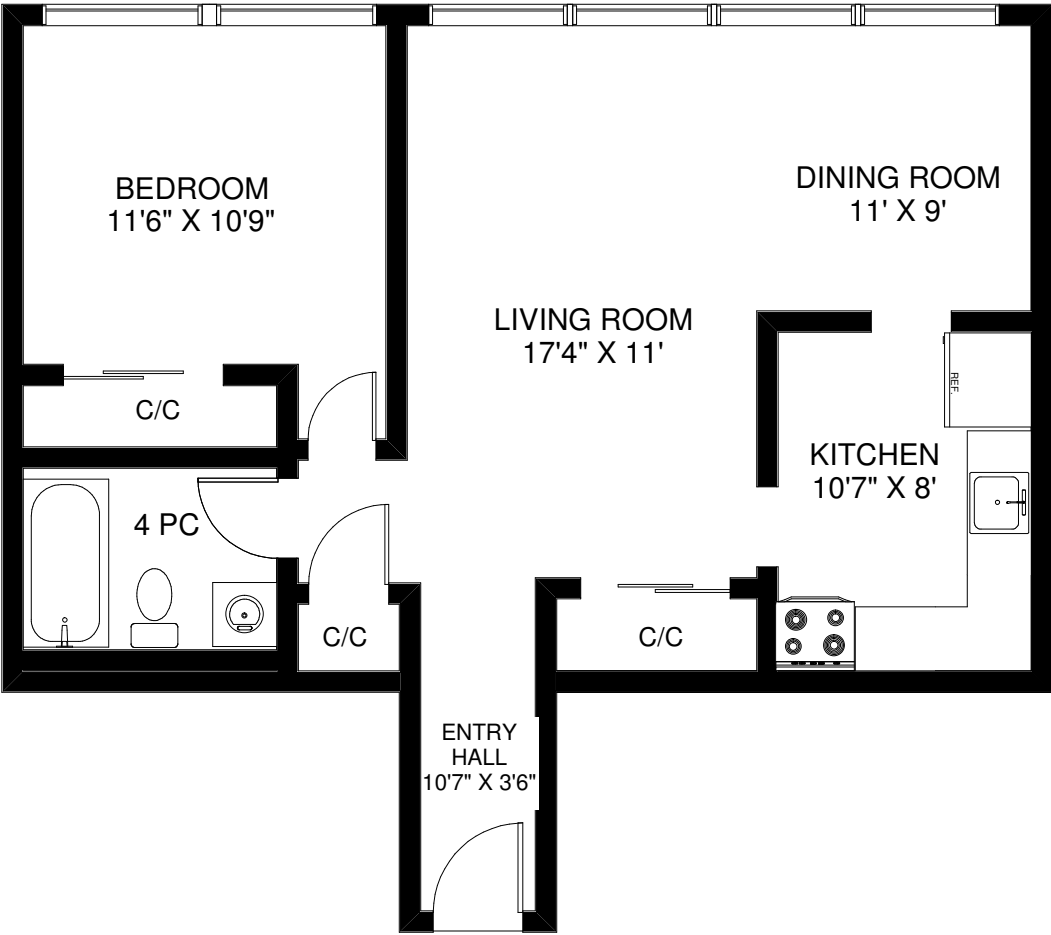


**725 DON MILLS AVENUE
UNIT #1501**

VIVIAN EYOLFSON
Sales Representative
Royal LePage Real Estate Services Ltd., Brokerage
(416) 762-8255



APPROXIMATELY 739 SQ FT

Note: Measurements & Calculations are approximate. Provided as a guideline only.

FLOOR PLANS BY KIM DORNEY
647-989-6526