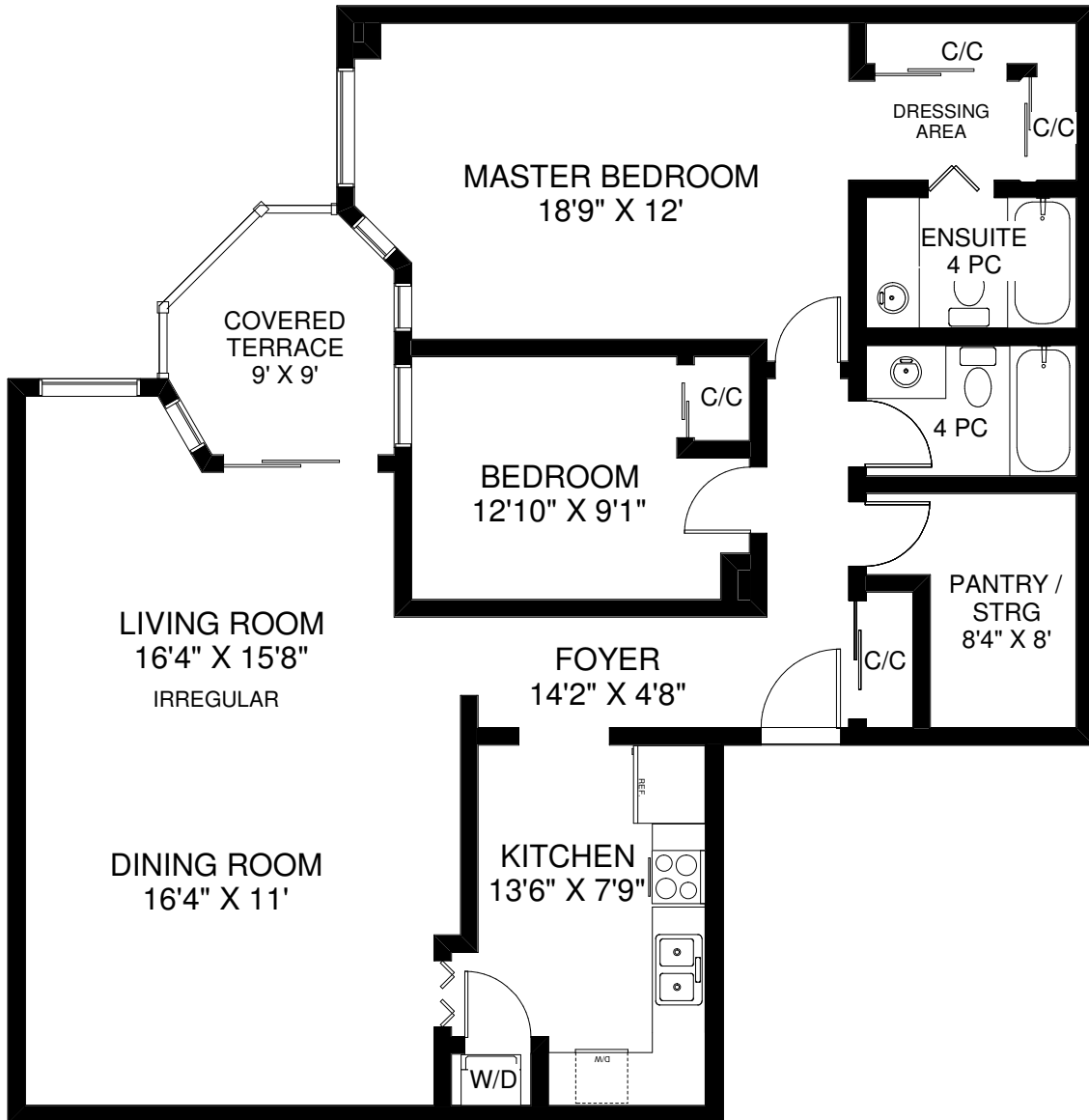


PALACE PIER
2045 LAKE SHORE BLVD WEST, UNIT 2102

VIVIAN EYOLFSON
Sales Representative
Royal LePage Real Estate Services Ltd., Brokerage
(416) 762-8255



APPROXIMATELY 1,299 SQ FT

FLOOR PLANS BY KIM DORNEY
647-989-6526

Note: Measurements & Calculations are approximate. Provided as a guideline only.